



OPERATIONS MANUAL

3/4" DRIVE IMPACT WRENCH P1065

PRODUCT INFORMATION

Serial Number: _____

Date of Purchase: _____

IMPORTANT SAFETY INFORMATION

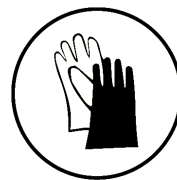
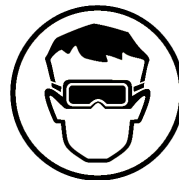
Please read, understand and follow all safety information contained in these instructions prior to the use of this tool. Retain these instructions for further use. These instructions are applicable for Impact Wrenches offered by Premium Tool & Abrasives..

INTENDED USE

This product is designed for installing and removing threaded fasteners in wood, metal and plastic. No other use is permitted. For professional use only.

WARNING

Always disconnect this tool from the air supply before installing, adjusting or removing any accessory for this tool, or before performing maintenance. Failure to do so could result in injury.



WARRANTY

Premium Tool & Abrasives warrants its Impact Wrenches for a period of **1 year** from the purchase date against manufacturing defects and will repair or replace (at its option) without charge any items returned. Repairs or replacements are warranted as described for the remainder of the original warranty period. Providing proof of purchase is strictly the responsibility of the customer. This warranty is void if the item has been damaged by accident or unreasonable use, neglect, improper service, or other causes not arising out of defects in material or workmanship. No other expressed warranty is given or authorized. Premium Tool & Abrasives disclaims any implied warranty of MERCHANTABILITY or FITNESS for any period beyond the expressed warranty and shall not be liable for incidental or consequential damages.

To obtain warranty service, return the item(s) prepaid to your nearest Authorized Warranty Repair Center or to Premium Tool & Abrasives at 10761 - 181 ST, NW. Edmonton, AB, Canada, T5S 1N3.

IMPORTANT SAFETY INSTRUCTIONS

To reduce the risks associated with the use of impact wrenches:

- Read, understand and follow the safety information contained in these instructions prior to using this tool. Keep these instructions for further reference.
- Only properly trained personnel should service this tool. Any other service will void warranty.
- Practice safety requirements - work alert and do not operate tools under the influence of alcohol or drugs.
- Operators and nearby personnel must always wear protection for eyes and ears when in the work area or while operating this product. Follow your employer's safety policy for PPE's and/or ANSI Z87.1 or local/national standards for eyewear and other personal protective equipment requirements.
- Never exceed marked maximum input pressure (90psi / .62Mpa / 6.2Bars).
- Proper eye protection must be worn at all times.
- Tool shall not be operated in the presence of bystanders.
- If you notice any abnormal noise or vibration when operating the product, immediately discontinue its use and inspect for worn or damaged components. Correct or replace the problem component. If the problem persists, return the tool to PTA Canada for repair or replacement. Please refer to warranty instructions
- Make sure the tool is disconnected from its air source before servicing, inspecting, maintaining, cleaning, and before changing impact product.

WARNING

RISKS	PREVENTION
Vibration	• If any physical discomfort is experienced, work should be stopped promptly to seek medical attention. Injury may result from repetitive work, motion and exposure to excessive vibration.
Loud Noise	• Always wear protection for eyes and ears while operating this product. Follow your employer's safety policy for PPE's and/or ANSI Z87.1 or local/national standards for eyewear and other personal protective equipment requirements..
Fire or Explosion	• Do not operate the tool in explosive atmospheres, such as in the presence of flammable liquids, gases, or dust.
Hazardous Voltage	• Do not allow this tool to come into contact with electrical power sources as the tool is not insulated against electrical shock.
Skin Abrasion/Burns/Cuts/Entrapment	<ul style="list-style-type: none"> • Keep hands, hair, and clothing away from the rotating part of the tool. • Wear suitable protective gloves while operating tool. • Do not touch the rotating parts during operation for any reason. • Do not force tool or use excessive force when using tool.
Hazardous Pressure Rupture	• Be aware that incorrectly installed hoses and fittings might unexpectedly come loose at any time and create a whipping/impact hazard.

PRODUCT CONFIGURATION / SPECIFICATIONS

PART NO.	DRIVE in.	STYLE	TORQUE ft-lbs (N-M)	SPEED rpm	PRODUCT NET WT. lb. (kg.)	BOLT CAPACITY in. (mm)	AIR CONSUMPTION cfm	INLET in.	HOSE SIZE in. (mm)
P1028	3/8	Aluminum Mini	400 (540)	9,000	3.5 (1.6)	5/8 (16)	5.8	1/4	3/8 (10)
P1030	1/2	Composite	1,000 (1,357)	7,500	4.4 (2.0)	3/4 (19)	10.2	1/4	3/8 (10)
P1035	1/2	Composite	1,000 (1,357)	9,500	5.0 (2.3)	3/4 (19)	7.3	1/4	3/8 (10)
P1038	1/2	Aluminum Mini	500 (680)	9,000	3.5 (1.6)	5/8 (16)	5.8	1/4	3/8 (10)
P1060	3/4	Composite	1,400 (1,900)	5,500	7.5 (3.4)	1-1/4 (32)	9.5	3/8	3/8 (10)
P1065	3/4	Composite	1,300 (1,764)	6,000	9.2 (4.2)	1-1/4 (32)	7.3	3/8	3/8 (10)

USE AND CARE

- Always operate, inspect and maintain tool in accordance with all regulations that may apply to handheld, hand operated pneumatic tools
- Use a clean lubricated air supply that will give a measured air pressure at the tool of 6.2 bar (90 psig) when the tool is running with the lever fully depressed. Tool will operate at less than maximum pressure - performance will be reduced.

Beginning of each use:

- Install desired impact wrench accessory
- Lubricate tool by putting 2 to 3 drops of suitable pneumatic motor lubricating oil into the hose end (inlet) of the tool. Connect the tool to the air line and run slowly for a few seconds. Disconnect to safely install desired impact accessory. If tool is used frequently, oil daily or when the tool begins to slow or lose power.
- Adjust switch on the back of the tool to desired forward or reverse motion. If your tool has multiple forward speeds, higher speed numbers represent higher tool power.
- Depress trigger to operate tool.

MAINTENANCE

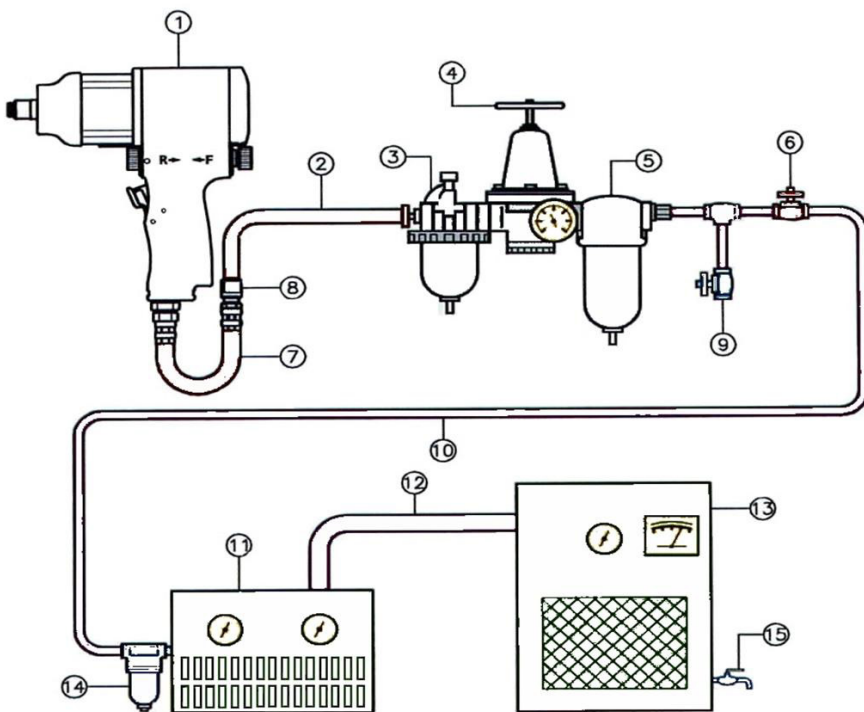
LUBRICATION

Air tools require regular lubrication throughout the life of the tool. The air motor and bearing uses compressed air to power the tool. Because the moisture in compressed air will rust the air motor, you must lubricate the motor daily. An inline oiler is recommended.

To lubricate the air motor manually:

- Disconnect the tool from the air supply holding it so the air inlet faces up.
- Depress the trigger and place one or two drops of air tool oil in the air inlet.
- Connect the tool to the air source, cover the exhaust end of the tool with a towel and run for a few seconds
- Do not lubricate tools with flammable or volatile liquids

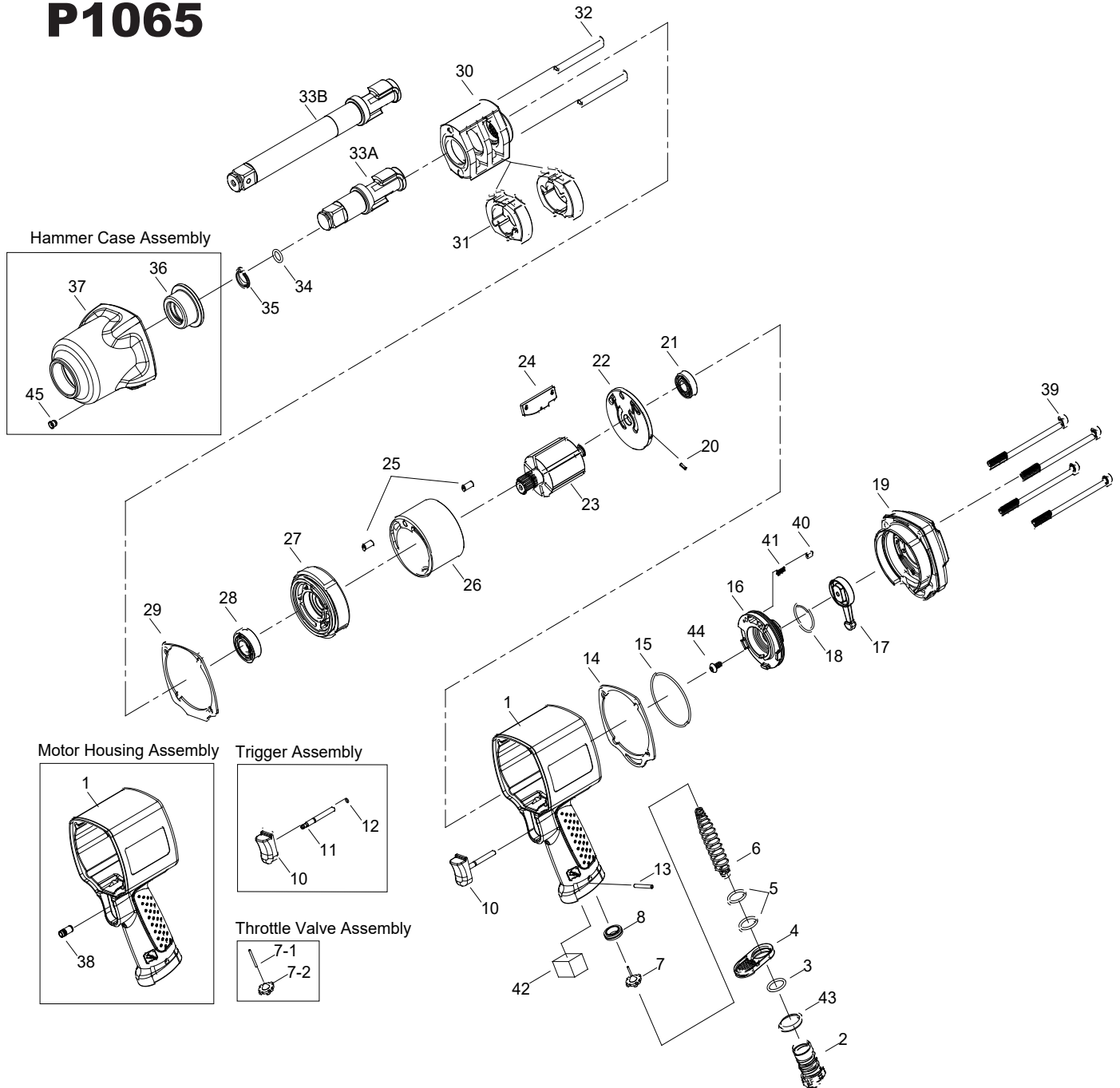
AIR TOOLS AND PIPE FITTING SYSTEM



PART	DESCRIPTION
1	Air Tool
2	Air Hose (3/8")
3	Oiler
4	Pressure Regulator
5B	Filter
6	Shut Off Valve
7	Lead Hose
8	Coupler Body and Connector
9	Drain Daily
10	1/2" or Larger Pipe and Fitting
11	Air Dryer
12	1" or Larger Pipe and Fitting
13	Air Compressor
14	Auto Drain
15	Drain Daily

IMPACT WRENCH PARTS SCHEMATIC

P1065



Part No.	Description	QTY	Part No.	Description	QTY
1	Motor Housing Assembly (incl. 38)	1	25	Spring Pin	2
2	Air Inlet	1	26	Cylinder	1
3	O-Ring	1	27	Front End Plate	1
4	Exhaust Deflector	1	28	Ball Bearing	1
5	O-Ring	2	29	Gasket	1
★ 6	Spring	1	30	Hammer Frame	1
7	Throttle Valve Assembly (incl. 7-1.7-2)	1	31	Hammer	2
7-1	Throttle Valve Pin	1	32	Hammer Pin	2
7-2	Throttle Valve	1	33A	Standard Anvil (for KI-1688-VG)	1
★ 8	Throttle Valve Seat	1	33B	6" Extended Anvil (for KI-1688-VG-6)	1
10	Trigger Assembly (incl.11.12)	1	34	O-Ring	1
11	Trigger Pin	1	35	Socket Retainer	1
12	O-Ring	1	36	Bushing	1
13	Spring Pin	1	★ 37	Hammer Case Assembly (incl.36.45)	1
14	Gasket	1	38	Bushing	1
15	O-Ring	1	39	Screw	4
16	Reverse Valve	1	40	Pin	1
17	Reverse Knob	1	41	Spring	1
18	O-Ring	1	42	Muffler Element	1
19	Backhead	1	43	Spacer	1
20	Pin	1	44	Screw	1
21	Ball Bearing	1	45	Grease Fitting	1
22	Rear End Plate	1	TK	Tune-Up Kit { incl.3.5 (2).6.14.15.17.18.24 (6) 29.34.35.41.42	
23	Rotor	1			
24	Rotor Blade	6			

★ Must be Purchased in Assembly Set

Premium Tool & Abrasives Co. Ltd.
 10761 181 Street, NW
 Edmonton, Alberta, Canada
 T5S 1N3

Telephone: 780.438.6576
Facsimilie: 780.436.4103
 e-mail: pta@premiumtool.com

FOR OTHER PRODUCT CATALOGUES, ASSISTANCE OR A DISTRIBUTOR IN YOUR AREA, PLEASE CALL:

1 800 661 6576

Find us online at: www.premiumtool.com